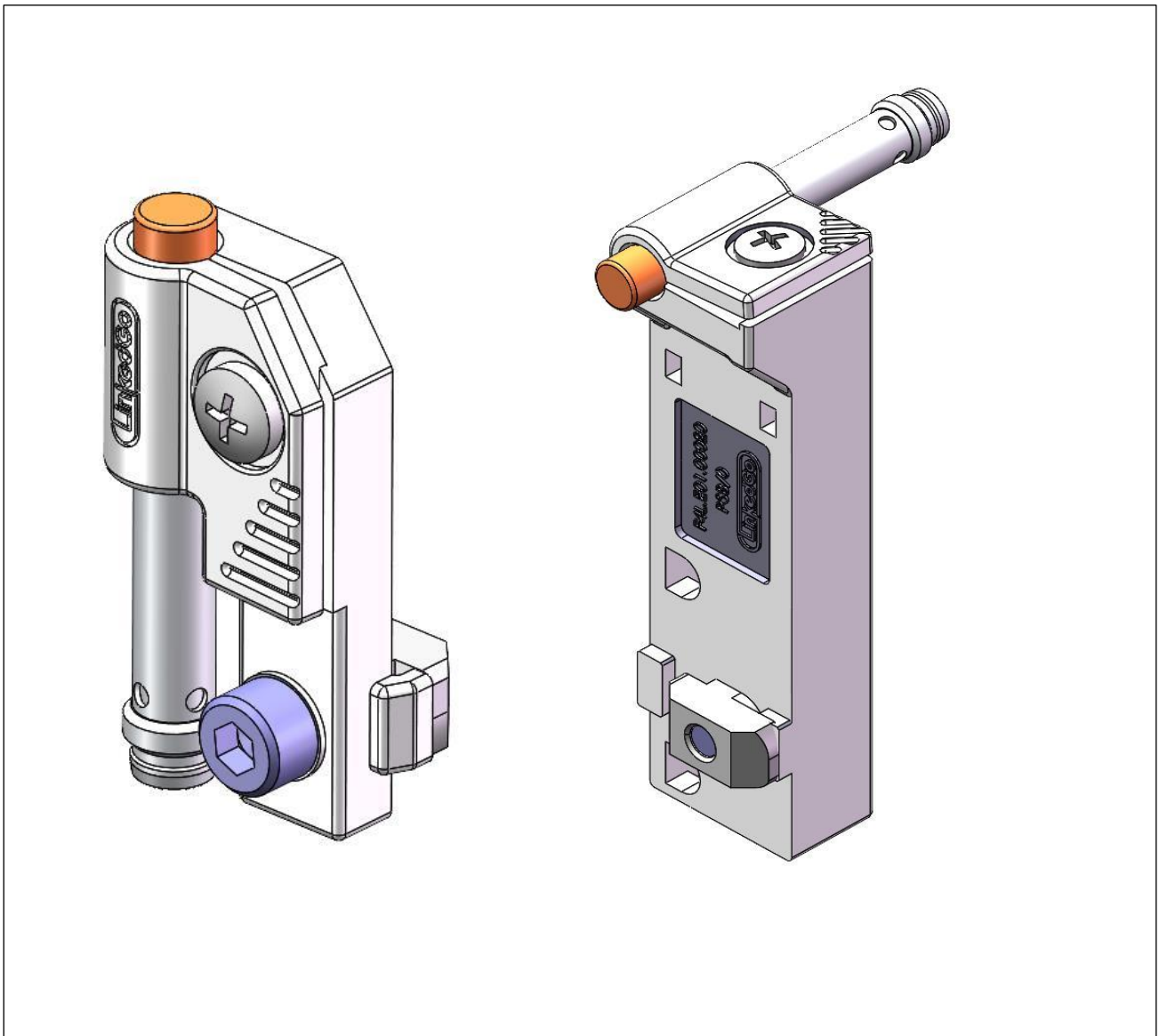


PSB1 Sensor Bracket Kit

Instruction & Maintenance Manual

PSB1 传感器支架套件安装使用维护手册



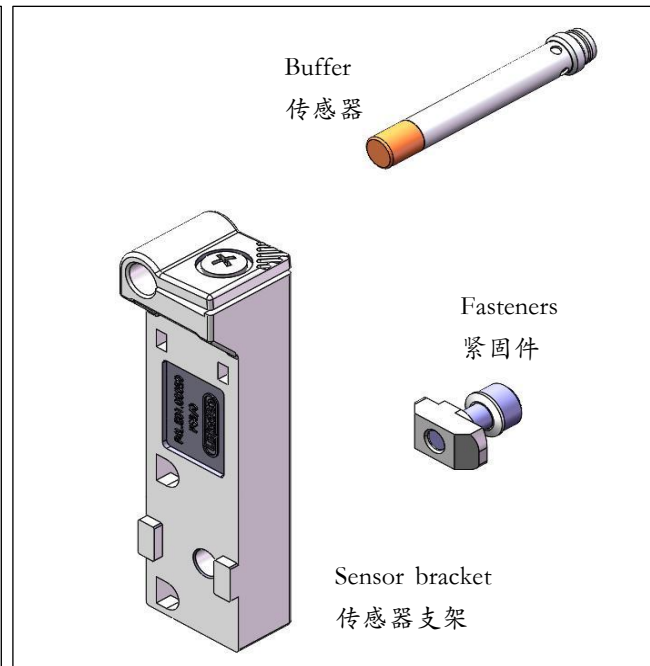
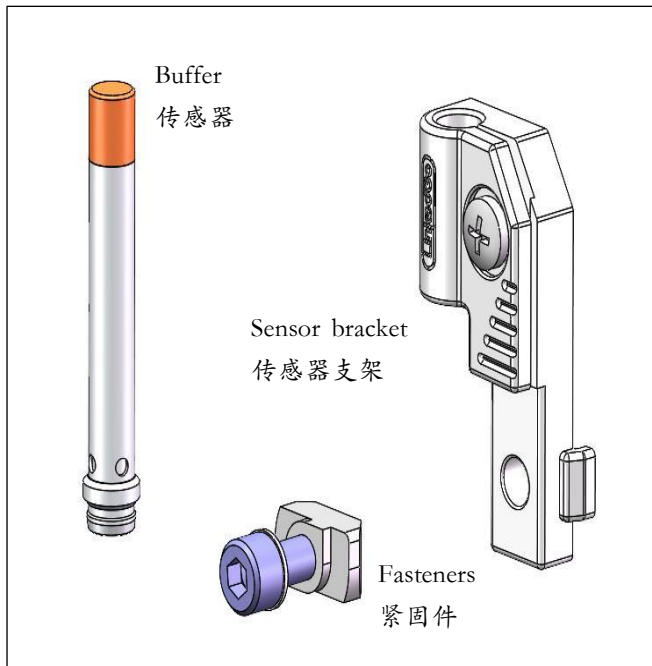
Suzhou LinkedGo Transfer System Co.,Ltd.

苏州领科工业技术有限公司

Structure Diagram 结构示意图

PSB1/I

PSB1/O



1. PS1 type sensor, inductive proximity switch; $\Phi 6.5/L=50\text{mm}$, sensing distance $4\text{mm} \pm 10\%$, output function normally open, electrical output DC10-30V PNP, installation method is non flush installation, suitable for $0-60^\circ\text{C}$ environment, connection method is M8 connection cable (provided by the customer).

1、PS1 型传感器，电感式接近开关； $\Phi 6.5/L=50\text{mm}$ ，感应距离 $4\text{mm} \pm 10\%$ ，输出功能常开，电器输出 DC10-30V PNP，安装方式为非齐平安装，适应 $0-60^\circ\text{C}$ 的环境，连接方式为 M8 连接线缆（客户提供）。

2. The PSB1 series sensor brackets are used to secure the PS1 sensor brackets.

2、PSB1 系列传感器支架皆用于固定 PS1 传感器的支架。

3. PSB1/I type is suitable for bottom sensing of workpiece tray position; PSB1/O type is suitable for side sensing of workpiece tray position.

3、PSB1/I 型适用于工件托盘位置的底部感应；PSB1/O 型适用于工件托盘位置的侧面感应。

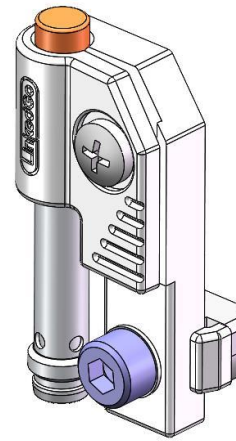
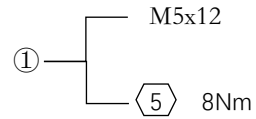
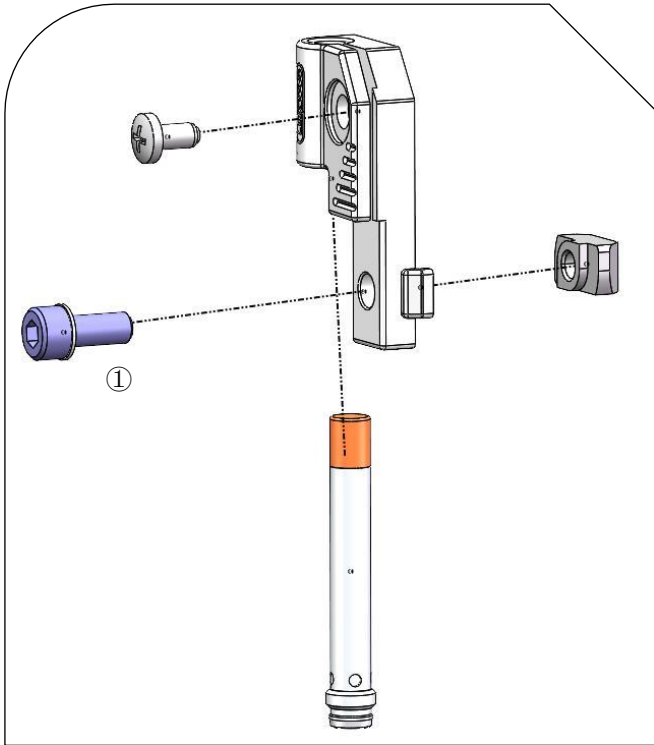
4. PSB1/I type is installed in the T-shaped groove on the inner side of the conveying section profile; The PSB1/O type is installed in the T-shaped groove on the outside of the conveying section profile.

4、PSB1/I 型安装在输送段型材内侧的 T 型槽内；PSB1/O 型安装在输送段型材外侧的 T 型槽内。

安装步骤 Installation steps

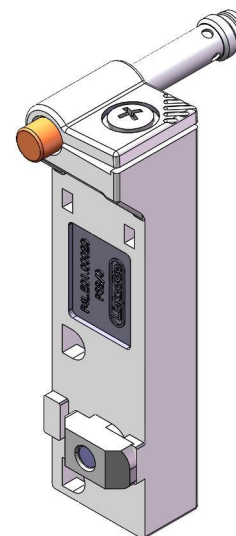
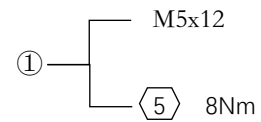
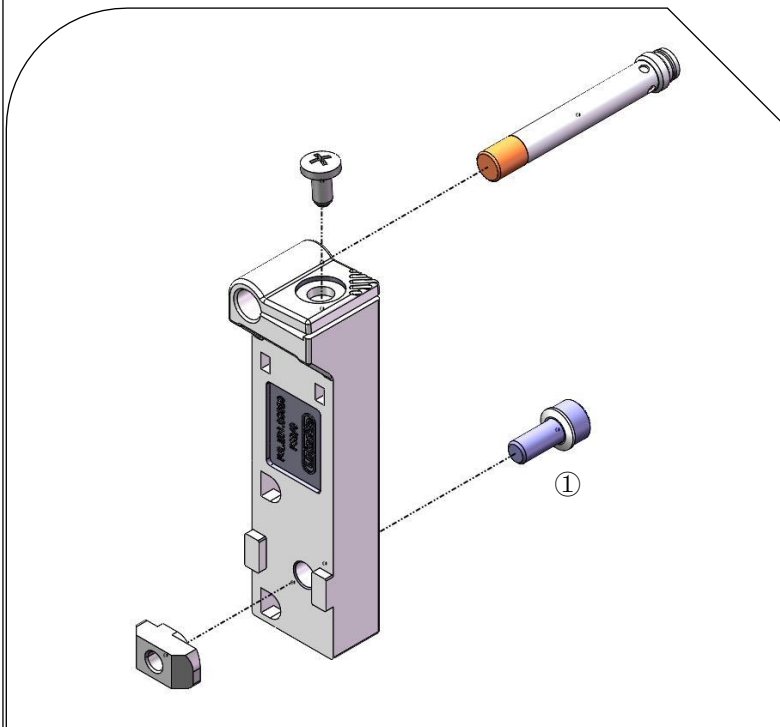
A Assemble the sensor bracket kit PSB1/I type.

A 组装传感器支架套件 PSB1/I 型。



B Assemble the sensor bracket kit PSB1/O type.

B 组装传感器支架套件 PSB1/O 型。



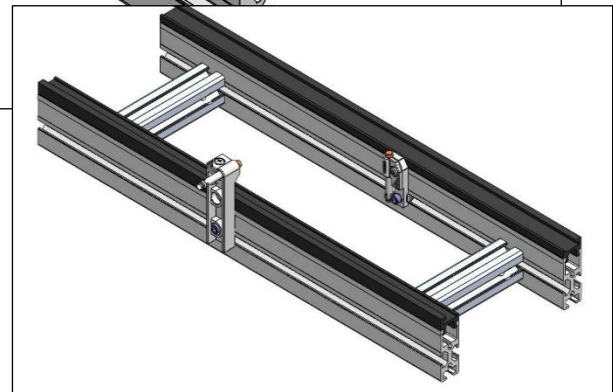
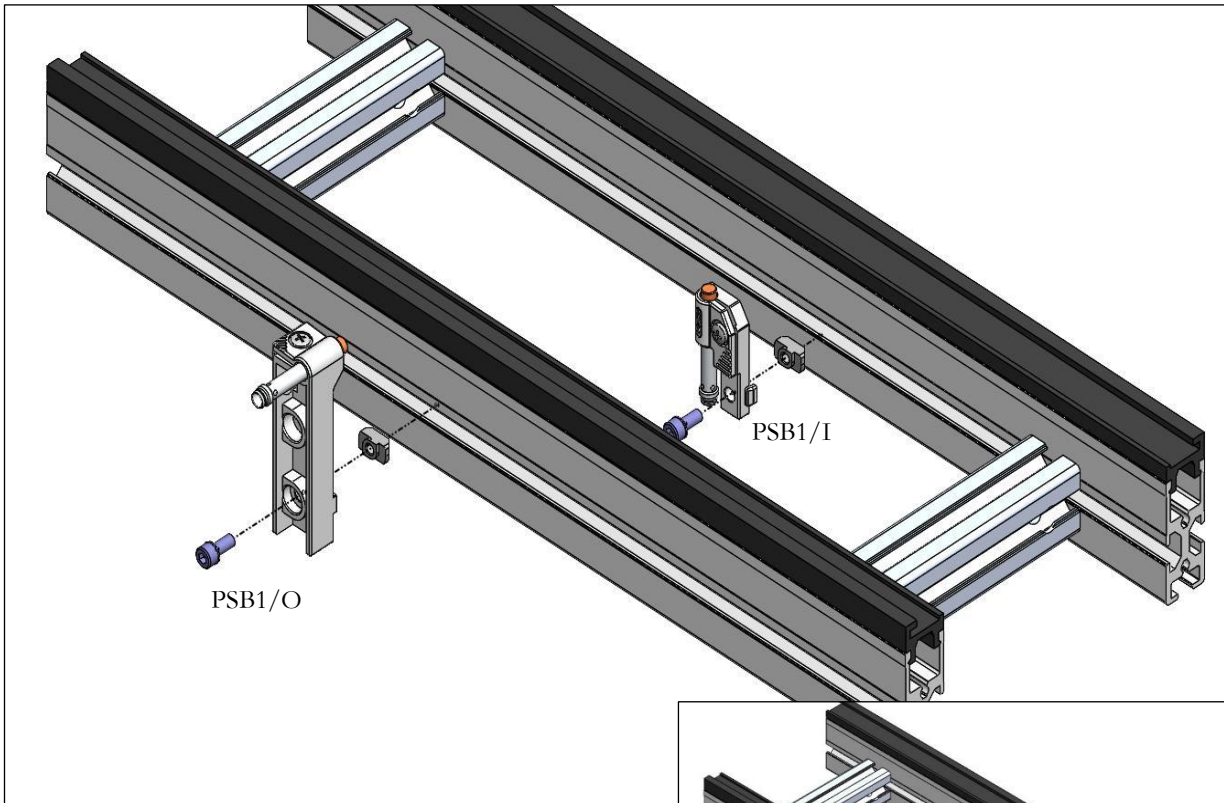
产品特征

安装步骤

维护保养

C Install to the wire body.

C 安装至线体。



PSB1/I type is installed in the T-shaped groove on the inner side of the conveying section profile; The PSB1/O type is installed in the T-shaped groove on the outside of the conveying section profile.

PSB1/I型安装在输送段型材内侧的T型槽内;PSB1/O型安装在输送段型材外侧的T型槽内。

Disclaimer

免责声明

The customer shall inspect the equipment regularly. If the customer fails to maintain the conveyor as the state above, leading to any malfunction or damage to the conveyor, our company will not be responsible for it, all related costs (including material costs, installation and commissioning fees, and hotel expense) shall be borne by the customer.

客户应定期对设备进行检查。若客户未按要求对输送机进行维护，进而导致输送机发生任何故障或损坏，我司将不承担相关责任，由此产生的相关费用（材料费，安装调试费，差旅费）均由客户承担。

Suzhou LinkedGo Transfer System Co.,Ltd.
苏州领科工业技术有限公司

[Tel: +86-512-6636 1885](tel:+86-512-66361885)

Add: Room 706, Building D, Dongchuang Science and Technology Park, No.
216 Jinfeng Road, Wuzhong District, Suzhou, P.R. China

Zip code:215101

E-mail: Sales@LinkedGo.com.cn

Website: [www. LinkedGo.com.cn](http://www.LinkedList.com.cn)

Subject to technical modifications

电话: +86-512-6636 1885

地址: 苏州市吴中区木渎镇金枫路 216 号东创科技园 D 幢 706 室

邮编: 215101

邮箱: Sales@LinkedGo.com.cn

网址: www.LinkedList.com.cn

我司保留技术更改的权利